

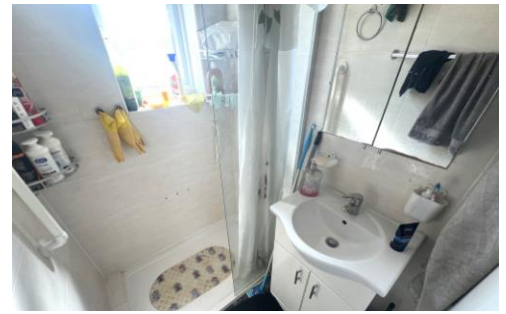


Alexandra Close
, Harrow, , HA2 8QA

Asking Price Of £325,000

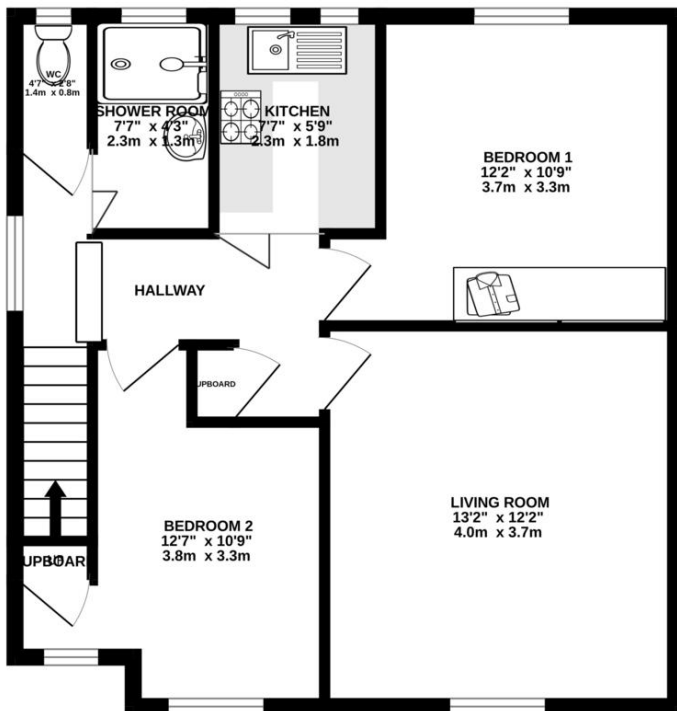
Property Summary

Magicbrick are pleased to present to the market this first floor maisonette located in this popular residential location and providing easy access to local schools, shops and parks. The property comprises of a living room, kitchen, two bedrooms, shower room and separate WC. The property benefits from double glazing, gas central heating, and rear garden. The property also includes the benefit of the



FIRST FLOOR
542 sq.ft. (50.4 sq.m.) approx.

%epcGraph_c_1_245%



- First Floor Maisonette
- Two Bedrooms
- Garden
- Double Glazing
- Gas Central Heating
- Chain Free
-
-
-
-

432 Alexandra Avenue
Harrow
Middlesex
HA2 9TW

www.magicbrick.co.uk
sales@magicbrick.co.uk
0208 004 4225

Agents Note: Whilst every care has been taken to prepare these sales particulars, they are for guidance purposes only. All measurements are approximate and for general guidance purposes only and whilst every care has been taken to ensure their accuracy, they should not be relied upon and potential buyers are advised to recheck the measurements